



Trees 
of Music

Regenerative Agroforestry Impact Network



RAIN is inspired by the communication between trees, where their interconnected roots, woven through a network of fine fungi threads, create an underground system of support and protection for the ecosystem.

Our mission is to implement agroforestry and ecological restoration projects that bridge the gap between environmental regeneration and food sovereignty, while honoring the ancestral wisdom and cultural heritage of the communities whose lives are deeply rooted in the land.



Photo: mangrove planting in
Alcântara, 2024

Our mycelial approach

We start by listening to the needs and aspirations of the communities we work with. They choose the sites to restore, the species to plant and the type of intervention, they are employed to do the work, and the benefits go to their area.

These projects are then designed by and for each community to raise living conditions tied directly to sustainable development goals to ensure viable benefits across communities.

Some of the restoration methods we use include seedling production, diverse species planting, assisted natural regeneration, agroforestry and erosion control planting.





What makes our work so significant?



1 **Community-centric projects**

Our projects go beyond restoration, empowering communities to develop revenue-generating activities that are both economically viable and environmentally sustainable.

2 **Real impacts**

Our approach extends beyond individual projects, aiming to make a broader impact on the landscape. Through our actions, we nurture increased biodiversity and actively support natural regeneration processes.

3 **Nature-based solutions**

Addressing the root causes of deforestation is integral to our mission. We prioritise long-term strategies that create sustainable pathways for communities to steward restored landscapes independently.

4 **Targeted funding**

With designated funding, we tackle the most pressing challenges head-on. Whether it's combating invasive species, supporting the community's agroforestry initiatives, mitigating fire risks or restoring hydrology, investments are strategically allocated to maximise impact and ensure project success.

5 **Strategic partnerships**

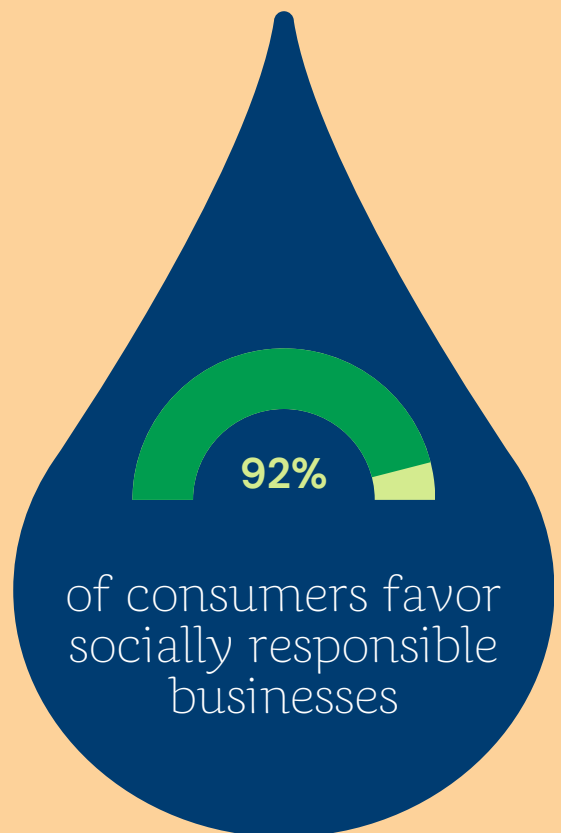
Connection is at the core of our approach. Through strategic partnerships with credible organisations, companies and academic researchers we amplify our impact on the environment, community and biodiversity within the same landscape. Together, we leverage collective expertise and resources to achieve greater results.



The world is evolving, and businesses and investors are adapting to this transformation.

Now more than ever, people are confronting the reality of shared challenges that unite us and ultimately impact the planet.

Earth is our primary resource provider, and impact investments are here to demonstrate that financial growth, environmental preservation and community empowerment should go hand in hand.



73% of investors consider CSR in investment decisions.

ESG-focused institutional investments are projected to reach \$33.9 trillion by 2026.

ESG mutual funds have outperformed non-ESG funds in 64% of the time.

88% of public companies have established ESG (Environmental, Social, and Governance) initiatives.





A network. A collective.

Environmental Causes

At RAIN, we recognise the critical role of land restoration in combating climate change and preserving endangered biodiversity. Through strategic partnerships and our expertise in ecosystem regeneration and in implementing community-led agroforestry programmes, we facilitate large-scale regeneration initiatives through our network. By supporting RAIN, you directly contribute to restoring ecosystems, reducing emissions and safeguarding habitats for future generations.

“ We are proud to be sponsors of RAIN, a charity that partners with indigenous nations, rural co-operatives and urban associations in Brazil. RAIN works with organisations like us who are able to provide financial support to locally run, life changing initiatives while at the same time making positive changes within our own practice.

- **David Harber LTDA**

”

Social responsibility

At the heart of RAIN's mission is community engagement and promoting sensitive cultural heritage projects. We not only choose to work closely with local communities, offering fair wages and sustainable employment opportunities, but our projects are decided by those who really understand and are connected to their lands. By participating in RAIN's restoration projects, you not only support environmental preservation but also foster social responsibility by improving livelihoods and promoting sustainable local economies. Our projects promote equity, with women and traditional peoples in leadership roles. We provide reports with metrics and expected impacts, as well as all necessary promotional material for our partners.

“ As founder of Green Paw Project, I believe vitally important that we humans collectively protect our planet's life support systems, turn carbon into breathable oxygen, and facilitate land regeneration to support biodiversity, helping local communities thrive. That's why we're backing RAIN's project in partnership with the Quilombo Kalunga. ”

- Stephen Chesters, Green Paw



Governance

Transparency is fundamental to RAIN's operations. We adhere to globally recognised standards and practices, ensuring transparency in our financial management. RAIN's financial records are publicly available for anyone interested in learning more about donations or investments, and our partners receive constantly updated budgets on how funds are allocated in the field.



Sustainable Development Goals

We meet





Socioeconomic metrics

- Track local workforce diversity in restoration/agroforestry initiatives, considering gender, age and economic aspects.
- Evaluate income growth from non-traditional sources vs. traditional streams.
- Assess indigenous and underrepresented community employment percentages for inclusive strategies and social equity projects.



Benefits to ecosystem services

- Monitoring the rate of carbon sequestration in restored areas to reflect the impact on climate change mitigation.
- Examining the shifts in water quality in restored water bodies like rivers and streams.
- Evaluating enhancements in soil fertility and nutrient cycling by conducting routine soil analyses to demonstrate improved ecosystem functionality.



Biodiversity indicators

- Evaluate the diversity of species in restored ecosystems through recognized biodiversity indices to demonstrate the effectiveness of regeneration initiatives.
- Track the population trends of significant indicator species (e.g., pollinators, endemic plants) to assess the well-being and adaptability of ecosystems.
- Implement biodiversity hotspot mapping to monitor alterations over time.



Connecting music and environmental action

Whether in Indigenous communities in Brazil or in the streets and churches in the UK, the sound of Trees of Music is present and loud, and the support from our partners highlights how a network of distributed intelligence makes everything possible.

RAIN launched Trees of Music with a clear original mission: to protect Brazilwood and prevent its extinction. This iconic tree played a fundamental role in the history of Brazil and also in the manufacture of bows for stringed instruments. But over the years it has faced relentless illegal exploitation.

Connecting the classical music community with the regeneration of this species was motivated by raising the importance of giving back to nature and protecting the tree that gave voice to music for so long.



Connection. Diversity.

Thriving trees need thriving ecosystems.

This initial work was essential to understand our audience and involve renowned classical musicians. We helped many people along the way, but we also learned. And that's why it's time to **move forward** to have more impact.

Our narrative is undergoing an organic shift: we want to talk about the whole, about biodiversity - how trees, people and musicians need connection. Our focus changes to taking care of the Atlantic Forest and all its biodiversity.

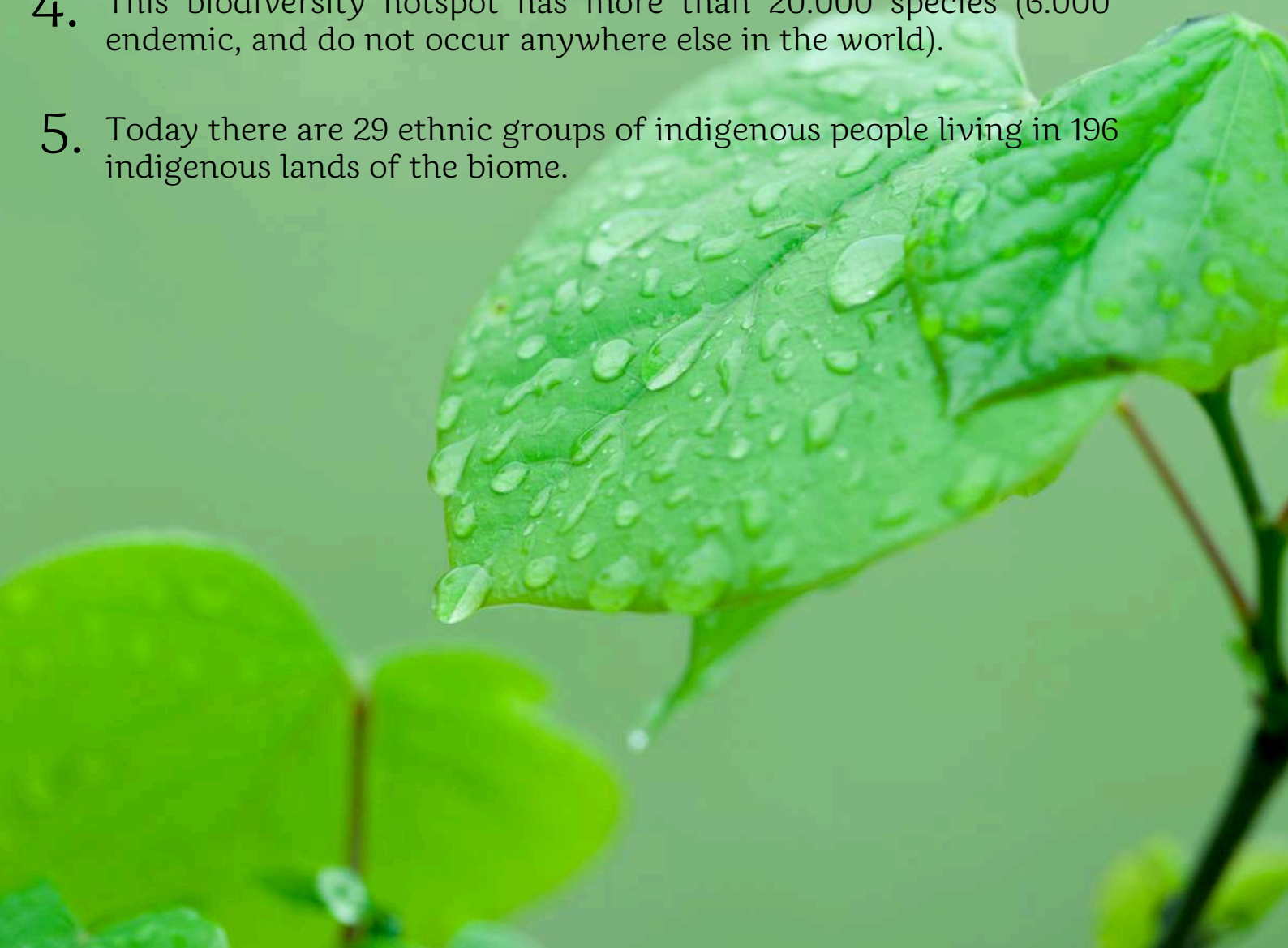
Brazilwood cannot grow alone without a diverse forest...



... In the same way, music cannot reach everyone without people to amplify it.

That's why we are working with scientists and other ecosystem restoration initiatives in Brazil to find ways to secure the remnants of its forest biome from rampant deforestation and plant saplings in the most effective manner. In the UK we are raising money to support this vital work, and classical musicians are lending their support.

WHY PROTECT THE ATLANTIC FOREST

1. The Atlantic Forest is among the world's most endangered biomes. Originally covering 1,309,736 km² (equivalent to 3.6 times the size of Germany), only 12.4% of its area remains.
 2. The Atlantic Forest covers nine of the 12 Brazilian hydrographic regions and many of its rivers have problems of water quantity and quality, although they supply most of the national population and industry.
 3. It hosts 70% of the Brazilian population (145 million people), 80% of the economy, the main cities, urban centres and industry, all depending on its severely threatened ecosystem services.
 4. This biodiversity hotspot has more than 20.000 species (6.000 endemic, and do not occur anywhere else in the world).
 5. Today there are 29 ethnic groups of indigenous people living in 196 indigenous lands of the biome.
- 

It Takes a Symphony to raise a Forest



Trees of Music goals:

- Promote Biodiversity and ecosystem resilience: Pau-Brasil can only thrive when it exists in a biodiverse forest. By protecting the Atlantic Forest, we create the conditions for its survival.
- Facilitate connection and collaboration: We are determined to create a space where musicians, music enthusiasts, environmentalists and traditional Brazilian communities can come together to protect the Atlantic Forest.
- Expand our reach and impact: We want more partnerships with organisations dedicated to preserving the Atlantic Forest to reach more people.
- Collaborate with musicians, music schools and music-related companies.
- Raise funds to plant 1 million trees in 2024.



Thank you for helping us continue
echoing the Trees of Music.

This story wouldn't be the same without
you.

Trees of music PM:
bianca@rainreforest.org

Founder, Co-director:
danny@rainreforest.org

Co-director, UK lead:
bridget@rainreforest.org

Co-director, Brazil lead:
james@rainreforest.org

rainreforest.org